

WIFI Vehicle Video Recorder

H.264 / FULL HD 1080P

User Manual



2021 FEB. V1.0

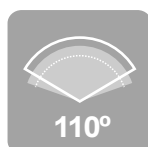


Table of Contents

- A. Product Accessories 2
- B. Features 2
- C. Specifications 4
- D. Product Appearance 5
- E. Vehicle wire installation instructions 6
- F. Installation diagram 8
- G. Connection 10
 - (a) QR Code download 10
 - (b) Android System 10
 - (c) IOS System 13

Safety Precautions

Dear Vacron user,

Appreciate for you purchase Vacron products. Please contact your local distributor if you meet any questions or need any assistance. We will offer you complete and in time service via a local distributor. However, we still have the rights to upgrade software and hardware without any kind notice beforehand. Please read this manual carefully before use of this product.

Installation Precautions

- Before installation, please ensure wires and cables connect correctly.
- Device has to install in a ventilated environment and the installation has to be guided or helped by any professional device installer.
- Please contact local distributor and technical support service if you have any question and need any help during product usage

In Use Precautions

- Please avoid any solid or liquid drop into the inner components.
- Do not disassemble, repair or replace parts of this equipment by yourself. If the machine cannot be used normally, please contact the buyer or manufacturer in time, and we will solve your problems caused by product problems in the shortest time.
- Installing this equipment If you install external equipment such as cameras or alarms outdoors, it is best to lead a ground wire at the screw of the vehicle system body to prevent the host from being damaged by static electricity caused by lightning.

Surrounding

- Please have the DVR under the recommended temperature and set it away from the sun and heating source.
- Please keep this equipment away from the humid surrounding.
- Please keep this equipment away from the smoke and dust environment.
- Please avoid strong collision and do not drop the equipment.
- Please install this equipment in ventilated place, and do not block the vents of device.
- Please use the device under rated voltage and Amp.
- Please keep flammable objects away from the equipment.

A. Product Accessories

Please check every accessory we listed below, make sure everything is included in the product package before use. If you found anything is missing, please contact the local distributor.

1. Camera *1
2. USB cable
3. 3M double-sided adhesive sticker



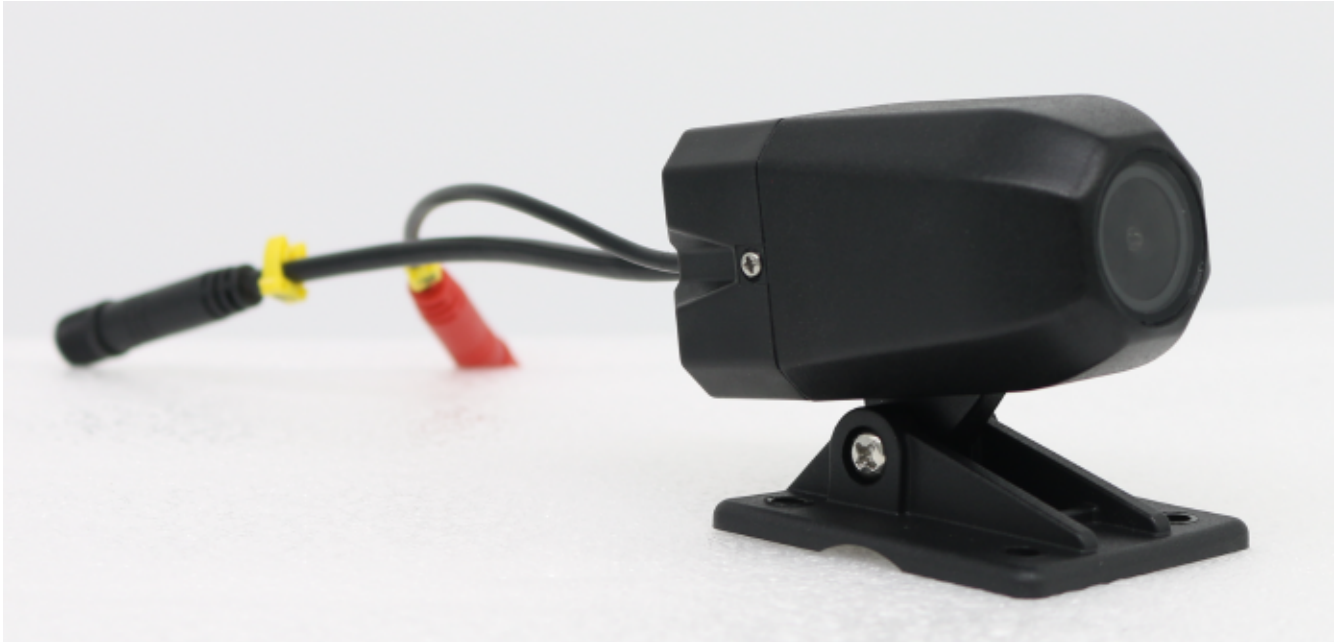
B. Features

1. View angle approx. 110° , built-in microphone to record video and audio sync.
2. H.264 image compress technology, which ensures image does not distort. Built-in EMMC 32G recording space, Full HD video resolution.
3. Low power consumption and efficient heat dissipation, no build-in Lithium battery to prevent possible danger and heat explosion.
4. Devices start recording automatically when the engine is on; the device will save file and turn off automatically when the engine is off.
5. Built-in WIFI, capable to watch live video, playback and backup files by download APP in IOS or Android system
6. Made in Taiwan, 1 year product warranty.

C. Specifications

Model	VVG-CBE59
Image sensor	1/2.9" SONY CMOS Image Sensor
Picture elements	2.12 Mega Pixel
Resolution	1920(H)×1080(V)
System	NTSC \ PAL
Resolution	1080P
Synchronization	internal
Scanning system	2:1interlace
Low lux	0.1LUX
Noise	Min 58db
AGC	ON
AEX	Auto: (1/25NTSC)(1/25 PAL)sec TO 1/50,000 sec
BLC	AUTO
MIC	Built-in high sensitivity microphone
Lens	Board Lens 3.3mm F1.8
View Angle	110°(Horizontal)/140°(Diagonal)/80°(vertical)
WLAN	IEEE802.11b/g/n, Wi-Fi compliant
Wi-Fi (option)	WPA,WPA-PSK,WPA2,WPA2-PAK,WEP
	64bit&128bit, IEEE802.11x,IEEE802.11i
G-Sensor	Built-in 6-axis sensor (3D accelerometer and 3D gyroscope)
Built-in memory	eMMC32GB
Power input	DC5V/1A
Power Consumption	750mA
waterproof level	IP66
Storage temp.	- 20° C ~ + 80°C
Working temp.	- 10° C ~ + 60°C
Dimension (LxWxD)	L66 x W33 x H33 mm (excluding bracket)

D. Product Appearance

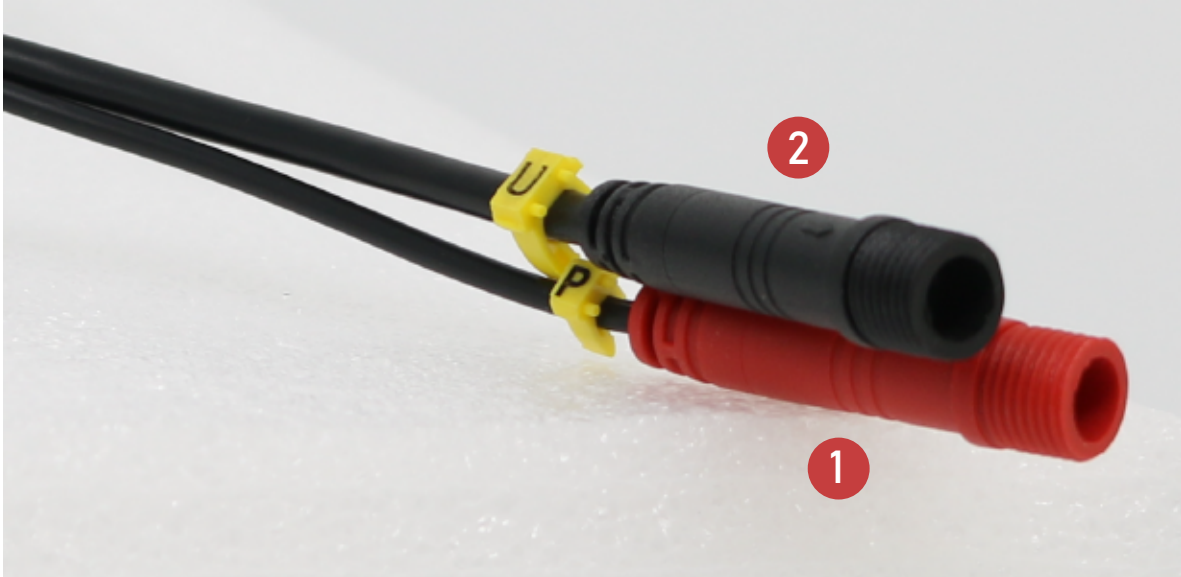


Host outlet

- Mark [P]: The power supply for the POWER terminal is DC +5V. You can use the USB adapter cable to connect the mobile power bank or the car USB power supply.
- Mark [U]: It is the USB interface end. You can use accessory USB cable to connect to this port, connect to computer equipment, and directly read image data for data access.
- The host has a built-in 32G eMMC memory, the maximum recording time is about 8 hours, and the recording space will be overwritten when the recording is full.
- To prevent electromagnetic interference, please wrap a magnetic ring around the end of the power cord and the end of the USB port:
 - (a). On the power cord connector [P], the farthest away from the main body, clamp a magnetic ring to fix it and cannot move
 - (b). On the USB port [U], the farthest away from the main body, clamp a magnetic ring to fix it and cannot move.
 - (c). Place a magnetic ring on the USB adapter cable, about 1 cm away from the TPYE A connector, and make a circle.

E. Vehicle wire installation instructions

Device Cables



(1) Power supply terminal DC 5V

(2) USB cable

Power cable

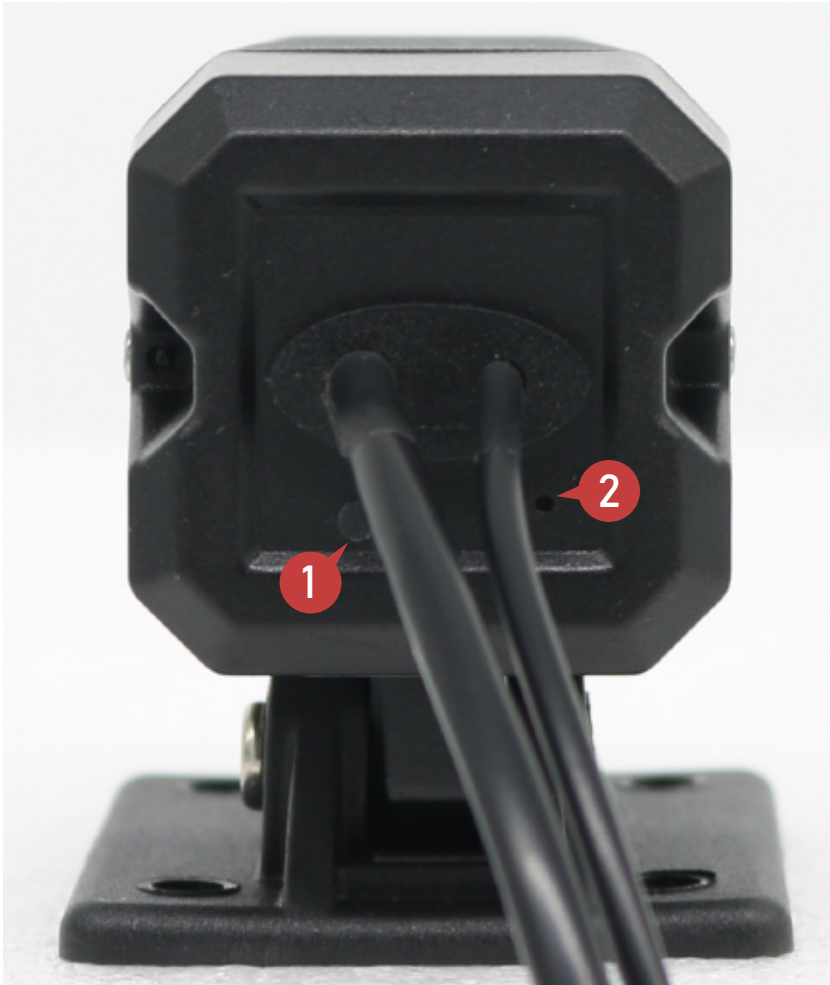


(3) USB cable

a. Can be connected to the power supply terminal with a mobile power bank.

b. Connecting to the USB terminal can download image data in batches using computer equipment.

Power cable



(1) Light indicator

- a. Red light flashes quickly. Read emmc data & update software
- b. The red light flashes slowly. During normal recording
- c. Green light is always on. Wifi connection is activated

(2) Mic sound hole

F. Installation diagram

For your reference only



Attention

- (a) For non-professional technicians, please use pasting methods during installation to avoid danger caused by construction tools damaging the locomotive fuel supply or power supply system.
- (b) It is recommended to use hose to cover the wire after high temperature and engine part wiring, which can extend the service life.
- (c) When wiring, do not avoid the gasoline pipeline and fuel tank position, and turn off the flame before installing to avoid danger.
- (d) When threading, wrap all connectors with tape to avoid dust blocking the metal terminals of the connectors and causing poor contact.
- (e) After wiring, wrap tape around all joints to avoid water ingress and loosening.
- (f) The power cord should be placed behind the key switch and fuse to avoid exhausting the battery power.
- (g) The main unit power supply is DV 5V. If you want to receive the wire, you must confirm the power supply voltage.
- (h) The wires are all attached with water and dust caps. If you don't need to use them, you need to lock the caps. Avoid water and dust and oxygen.

Installation Precautions

- (a) If some vehicles are not certified for electromagnetic interference, they may interfere with the operation of the camera and cause abnormal video interruption.
- (b) When the connector has sand, dust, oil stains..., it needs to be cleaned with alcohol to avoid abnormal recording caused by poor signal.
- (c) The machine has standby current, please unplug the power when not using the vehicle for a long time to avoid draining the battery.
- (d) The storage system has read/write times and life issues. It is recommended to check regularly and use a computer to play images to ensure that the memory card can still be read and written normally.
- (e) In the event of impact and high vibration, it may cause physical damage to the magnetic area of the memory card, resulting in intermittent playback or inability to play. It is recommended to check and backup important materials regularly.
- (f) In the event of an accident, please make sure to use APP or computer to back up and save the files to avoid data being modified or overwritten.
- (g) Before installing or removing the camera, the power must be turned off to avoid abnormal power or short circuit.

G. WiFi connection operation

(a) QR Code download :

Fuho Moto IOS version



Fuho Moto Android version



(b) Android system :

1. Visit Google play store, search for "FUHO MOTO" and download
2. WLAN connection, type in 「DIRECT-SSID-XXXXXX」 as user ID, password as 「12345678」
3. Open "FUHO MOTO", watch real-time video record by selecting real-time video
4. Click 「Near-end Playback」 : To play all recorded files of the host.
5. Click "Near-end file download": download the required images, each download takes about 3 minutes
6. Click "Save Records": you can view all the records and the images of the local download records



APP main screen

Live view



(1)

VVG-CBE59 is a single-channel Wifi driving recorder, you need to confirm that the channel selection needs to be channel 1.

(2)

Record of the day: sorted according to the recording time. You can click the time period to be played back to confirm the image screen.

Replay download: select the time segment to be downloaded, click the download icon on the right, select channel 1 to download the video, do not remove VVG-CBE59 power supply during download to ensure complete image data download.

※VVG-CBE59 is a single-channel model. Please do not select channel 2 to download data



The image data suffix (XXXX_G) is triggered by the G-Sensor, and the image will be marked with G when it is impacted or violently shaken.

After downloading the data, please confirm the downloading data in the storage record.

Save records



(3)

Save records:

According to the download record to confirm whether the image data has been downloaded completely .

The download record is different according to the mobile phone manufacturer of the storage device and needs to be confirmed.

Example:

Mobile phone file management phone folder → VacronMoto → videos → Save image data

system setting



(4)

system setting :

device sound : You can select microphone On/Off

Wifi setting : Users can define the SSID name and password by themselves.

(After modification, the system will be restarted, please log in with the new account password)

Device information: You can enter the device license plate data and display it in the real-time image.

Restore default : If you need to restore the factory defaults, you can click this button, and the wifi account.

Format SD Card : Clear the image data in the built-in memory.
Please note that this option cannot be restored.
Please confirm whether important image data has been downloaded.

Version :

F/W : Display the device current version

App : Display APP current version

(c) IOS :

1. Search and download "VACRON MOTO" in Apple store.
2. WLAN connection, type in 「DIRECT-SSID-XXXXXX」 as user ID, password as 「12345678」
3. Open "VACRON MOTO", watch real time video record by selecting real time video
4. Select 「Playback」 : Capable play all video files that storage in SD card.
5. Click "Near-end file download": download the required images, each download takes about 3 minutes
6. Click "Save Records": you can view all the records and the images of the download records.



APP main screen

Live view



(1)

VVG-CBE59 is a single-channel Wifi driving recorder, you need to confirm that the channel selection needs to be channel 1.



(2)

Record of the day: sorted according to the recording time. You can click the time period to be played back to confirm the image screen.

Replay download: select the time segment to be downloaded, click the download icon on the right, select channel 1 to download the video, do not remove VVG-CBE59 power supply during download to ensure complete image data download.

※VVG-CBE59 is a single-channel model. Please do not select channel 2 to download data

The image data suffix (XXXX_G) is triggered by the G-Sensor, and the image will be marked with G when it is impacted or violently shaken.

After downloading the data, please confirm the downloading data in the storage record.

儲存記錄



(3)

Save records:

According to the download record to confirm whether the image data has been downloaded completely .

The download record is different according to the mobile phone manufacturer of the storage device and needs to be confirmed.

Example:

Mobile phone file management phone folder → VacronMoto → videos → Save image data

系統設定



(4)

system setting :

device sound : You can select microphone On/Off

Wifi setting : Users can define the SSID name and password by themselves.

(After modification, the system will be restarted, please log in with the new account password)

Device information: You can enter the device license plate data and display it in the real-time image.

Restore default : If you need to restore the factory defaults, you can click this button, and the wifi account.

Format SD Card : Clear the image data in the built-in memory.
Please note that this option cannot be restored.
Please confirm whether important image data has been downloaded.

Version :

F/W : Display the device current version

App : Display APP current version



Attention

Please try recording the video first and then play it to make sure the machine is operating normally. Please note that if the machine's accessories, including the memory card malfunction, The manufacturer, its affiliates and distributors are not liable for any losses caused by the inability to shoot images or read the image format.

Before using this product, please make sure you have read the following safety precautions. And please make sure that your method of operating the product is correct.

1. It is normal for the Live screen to be delayed due to wireless transmission and reception problems.
2. The remote operation function is limited to only data in the storage device. If the image data has been copied, the data for that period cannot be searched.
3. When the operation is over, please remember to close the WiFi connection with the machine, otherwise the phone will not be able to connect to the external network.
4. Please store this equipment out of the reach of children and babies.
5. Please use only the recommended power supply.
6. Do not use an external (multi-hole) cigarette lighter to avoid product crashes, loss of power and inability to record videos due to unstable voltage of the cigarette lighter.
7. The cigarette lighter power supply and the power supply of this product must be tightly closed.
8. Do not try to disassemble, modify or heat the product.
9. Avoid dropping the product on the ground or subjecting it to violent impact.
10. To avoid injury, please do not touch the inside of the product after it is dropped or damaged.
11. If the product emits smoke, peculiar smell or other abnormalities, please stop operating the product immediately.
12. Do not use organic solvents such as alcohol, benzene or paint thinner to clean the product.
13. Do not let the product come into contact with water (such as sea water) or other liquids.
14. Do not let any liquid or foreign objects enter the machine.
15. Do not place the battery near a heat source or expose it to flames.
16. Do not touch the power cord with wet hands.
17. Do not use this equipment in power outlets or wiring accessories that exceed the specified voltage. Do not use damaged power cords or plugs, Or not fully plugged into the power outlet
18. Please avoid the terminals or plugs from touching metal objects (such as pins or keys) or stains.
19. Please avoid using, placing or storing the product in humid or dusty places.



More information about products

Please visit our website

<http://www.vacron.com>

Made in Taiwan